

**Explosion protected linear light luminaire**  
Zone 1, 2, 21 and 22

**CROUSE-HINDS**  
SERIES

# VLL Series

LED linear fixtures for hazardous areas



**Safe. Reliable. Efficient.**

**EATON**

*Powering Business Worldwide*

# VLL LED Zone 1 GRP linear luminaires

## Features & specifications

The Zone 1 VLL product Series LED Luminaires with high-quality LED chips, have extremely long lifespan. Multiple versions of the LED are available, providing ideal solutions for indoor or outdoor areas to retrofit existing fluorescent luminaires.

Model	Nominal* lumens	Wattage	Efficacy	Equivalent fluorescent
VLL-3L	3100	<25 W	>130~Lm/W	2x18 W
VLL-5L	6400	<50 W	>130~Lm/W	2X36 W
VLL-7L	7400	<58 W	>130~Lm/W	2X54 W

\*Lumen values apply to 5700K light color, 70 CRI luminaires. Lumen output may vary slightly for different models.  
\*Tolerance+/-10%

## Application

- Locations where require continuous and consistent light levels in extreme ambient temperatures
- Areas requiring frequent on-and-off of lights
- Where flammable vapors, gases, ignitable dusts, fibers or flyings are present; indoors or outdoors
- Where extremely corrosive, wet, dusty, hot and/or cold conditions exist
- Marine, wet locations and hose-down environments
- Manufacturing plants; heavy industrial, chemical, petrochemical or pharmaceutical facilities; platforms; loading docks; tunnels



## Benefits:



### EFFICIENCY

- Industry leading lumen efficacy up to 130~lm/w reduces energy consumption and delivers cost savings.
- Three lumen packages available from 3100 to 7400lm providing a versatile solution for different illumination applications.



### SAFETY AND RELIABILITY

- Rugged design for extremely harsh environments, IP66 even under vibration.
- Optional self-contained battery for emergency lighting applications delivers 25% of standard lumen output for 1.5-hours or 3-hours.



### EASY INSTALLATION AND MAINTENANCE

- Retrofit- friendly with optional sliding rail mounting system, allowing brackets to be easily adjusted to existing mounting holes.
- Self-monitoring status battery indicator makes easy for maintenance check.
- Inhibit switch comes as standard for our emergency fitting which is suitable for offshore unmanned platform application.



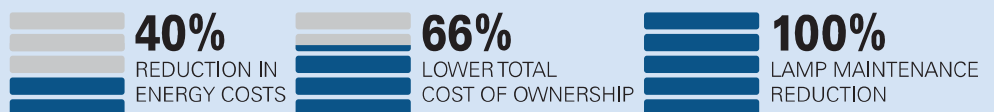
### LATEST POLE MOUNTING

- Strengthened reliability with build-in cable gland and no-exposed cables
- No sideways rotation with strong resistance to heavy winds
- Externally accessible Ex e chamber for easy termination

## LED vs. fluorescent savings at a glance

Why are so many facilities making the switch from fluorescent to LED? The numbers say it all.

## VLL-5L vs. 2 x 36 W Fluorescent



# VLL LED Zone 1 GRP linear luminaires

## Standard materials

- Enclosure-Glass Fiber Reinforced Plastic (GRP)
- Diffuser-Polycarbonate (PC)
- Gaskets-Silicone
- Fasteners-All external fasteners stainless steel
- Safety switch as standard

## LED system:

- Cold white 5700K
- Optional: 4000K, 5000K
- All series feature field replaceable LED modules
- Fog diffuser with glare protection as standard
- Rated life of 5 years at 55°C provides long term, low-maintenance operation.

## Certifications and compliances

- Marking accd.to IECEx (versions with safety switch)  
Ex db eb mb IIC T5 Gb  
Ex db eb ib mb IIC T5Gb (EM)  
Ex tb IIIC T80°C Db
- Marking accd.to ATEX (versions with safety switch)  
Ⓢ II2 G Ex db eb mb IIC T5 Gb  
Ⓢ II2 G Ex db eb ib mb IIC T5Gb (EM)  
Ⓢ II2 G Ex tb IIIC T80°C Db



## Technical data

<b>IECEX-certification</b>	IECEX NEP 21.0020X		
<b>EU-type examination certificate</b>	SEV 24ATEX 0708X		
<b>Ambient temp</b>	standard	VLL 3L, 5L, -40 °C ... 55 °C	VLL 7L -40 °C ... 50 °C
	emergency:	VLL 3L, 5L, -25 °C ... 50 °C	VLL 7L -25 °C ... 45 °C
<b>Rated input volt</b>	100 - 240 V AC 50/60 Hz,		DC 108 - 250 V
<b>Power factor</b>	>0.9		
<b>Color Temperature</b>	5700 K as standard		4000 K / 5000 K optional
<b>CRI</b>	CRI 70 5700 K		CRI 80 4000 K / 5000 K
<b>System watt*</b>	VLL 3L series: <25 W		
	VLL 5L series: <50 W		
	VLL 7L series: <58 W		
<b>Lumen output</b>	VLL 3L series: 3100 Lm		
	VLL 5L series: 6400 Lm		
	VLL 7L series: 7400 Lm		
<b>Material</b>	GRP and PC		
<b>Weight</b>	VLL 3L series Normal and EM:		4.3Kg / 5.8Kg
	VLL 5L /7L series Normal and EM:		7.5Kg / 9.8Kg
<b>Terminals</b>	Max 6 mm <sup>2</sup>		
<b>Entry size</b>	M20 or M25		
<b>Out line dimension</b>	VLL 3L series: 732x178x125		VLL 5L /7L series:1333x178x125
<b>Backup duration &amp; Lumen percentage</b>	EM1 = 1.5 h,25% output as standard version		
	EM2 = 3 h, 25% output is available		
<b>IP(IEC60598)</b>	IP66		

\*Tolerance+/-5%

# VLL LED Zone 1 GRP linear luminaires

## Ordering Information standard version

Product Type	Colour Temp <sup>1)</sup>	Throughwiring <sup>2)</sup>			Entry Threaded	Ex e Threaded Plug <sup>3)</sup>	Part No. <sup>4)</sup>
		Terminals	Single-ended	Twin-ended			
<b>VLL 3L</b>							
VLL-3L-57-1/6-120	5700K	1x6	●	-	2xM20	1	CCL2004125AE
VLL-3L-57-2/6-220		2x6	-	●	4xM20	2	CCL2004129AE
VLL-3L-57-1/6-125		1x6	●	-	2xM25	1	CCL2004127AE
VLL-3L-57-2/6-225		2x6	-	●	4xM25	2	CCL2004131AE
<b>VLL 5L</b>							
VLL-5L-57-1/6-120	5700K	1x6	●	-	2xM20	1	CCL2004173AE
VLL-5L-57-2/6-220		2x6	-	●	4xM20	2	CCL2004177AE
VLL-5L-57-1/6-125		1x6	●	-	2xM25	1	CCL2004175AE
VLL-5L-57-2/6-225		2x6	-	●	4xM25	2	CCL2004179AE
<b>VLL 7L</b>							
VLL-7L-57-1/6-120	5700K	1x6	●	-	2xM20	1	CCL2004221AE
VLL-7L-57-2/6-220		2x6	-	●	4xM20	2	CCL2004225AE
VLL-7L-57-1/6-125		1x6	●	-	2xM25	1	CCL2004223AE
VLL-7L-57-2/6-225		2x6	-	●	4xM20	2	CCL2004227AE

## Ordering Information emergency version

Product Type	Colour Temp <sup>1)</sup>	Throughwiring <sup>2)</sup>			Entry Threaded	Ex e Threaded Plug <sup>3)</sup>	Part No. <sup>4)</sup>
		Terminals	Single-ended	Twin-ended			
<b>VLL 3L Emergency</b>							
VLL-3L-57-EM1-1/6-120	5700K	1x6	●	-	2xM20	1	CCL2004133A
VLL-3L-57-EM1-2/6-220		2x6	-	●	4xM20	2	CCL2004137A
VLL-3L-57-EM1-1/6-125		1x6	●	-	2xM25	1	CCL2004135A
VLL-3L-57-EM1-2/6-220		2x6	-	●	4xM25	2	CCL2004139A
<b>VLL 5L Emergency</b>							
VLL-5L-57-EM1-1/6-120	5700K	1x6	●	-	2xM20	1	CCL2004181A
VLL-5L-57-EM1-2/6-220		2x6	-	●	4xM20	2	CCL2004185A
VLL-5L-57-EM1-1/6-125		1x6	●	-	2xM25	1	CCL2004183A
VLL-5L-57-EM1-2/6-225		2x6	-	●	4xM25	2	CCL2004187A
<b>VLL 7L Emergency</b>							
VLL-7L-57-EM1-1/6-120	5700K	1x6	●	-	2xM20	1	CCL2004229A
VLL-7L-57-EM1-2/6-220		2x6	-	●	4xM20	2	CCL2004233A
VLL-7L-57-EM1-1/6-125		1x6	●	-	2xM25	1	CCL2004231A
VLL-7L-57-EM1-2/6-225		2x6	-	●	4xM25	2	CCL2004235A

<sup>1)</sup> Tolerance +/- 10%

<sup>2)</sup> Through wiring 6 x 2.5 mm<sup>2</sup>

<sup>3)</sup> Standard version without cable gland. if need, please order separately

<sup>4)</sup> Contact your local sales representative for special requirements.

# VLL LED Zone 1 GRP linear luminaires

## Dimensions (mm)

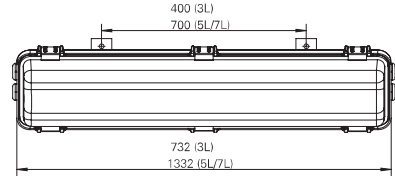
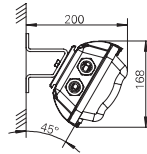
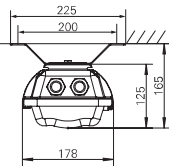
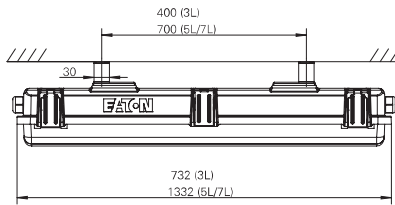


Fig.1  
Ceiling Mounting

Fig.2  
Wall Mounting

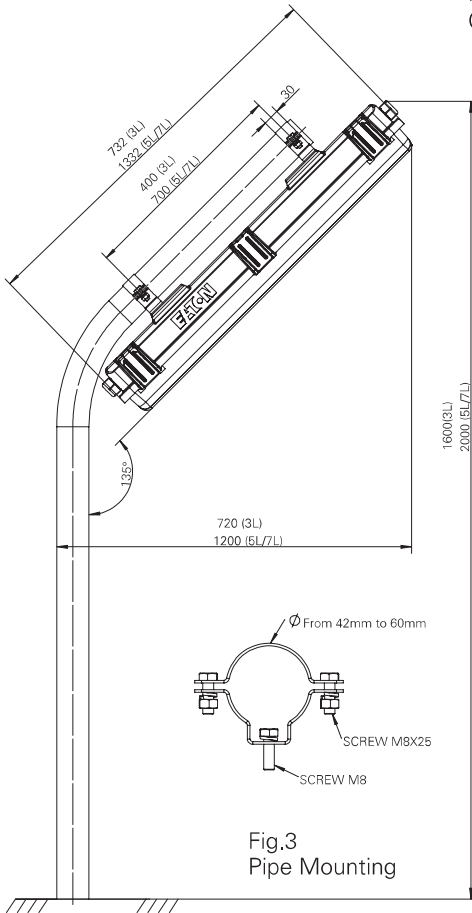


Fig.3  
Pipe Mounting

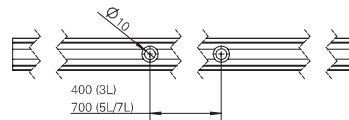
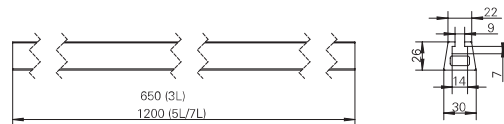
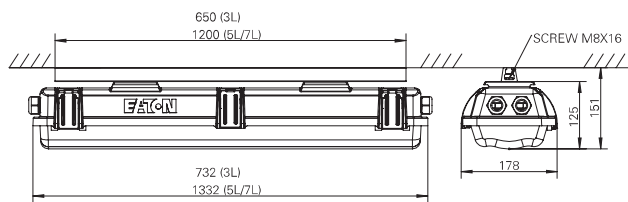
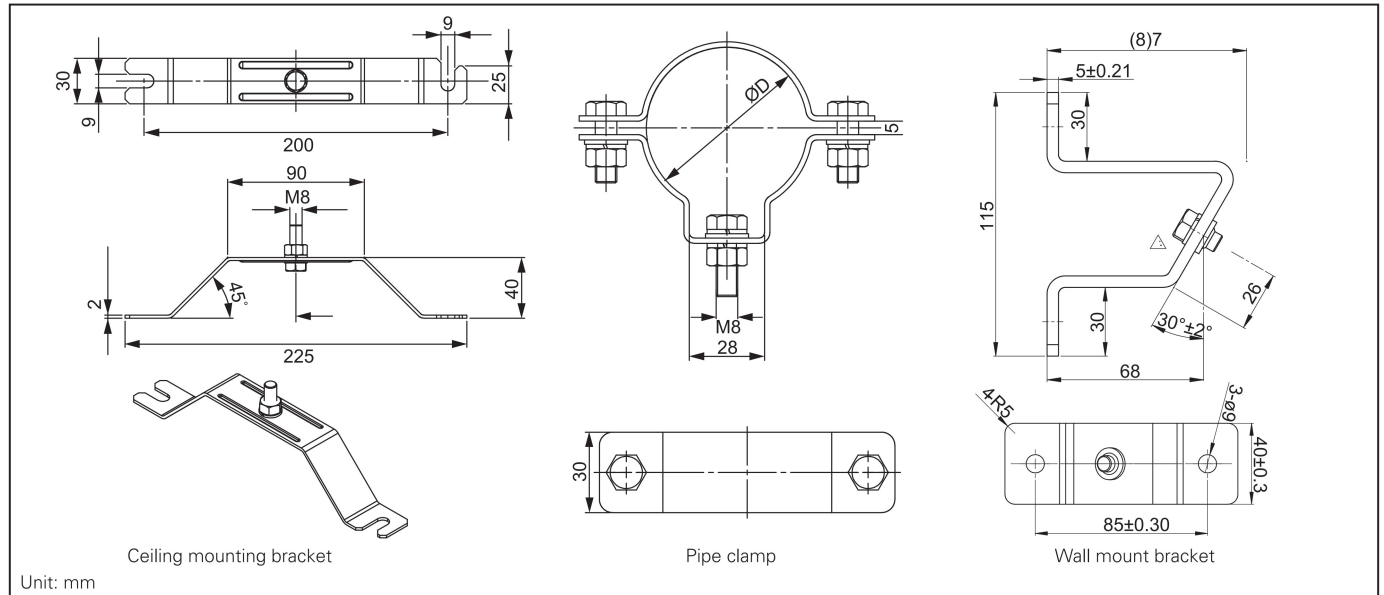


Fig.4  
Ceiling Mounting  
with Sliding Rail

# VLL LED Zone 1 GRP linear luminaires

## Mounting accessories (To be ordered separately)



### Pipe mounting

Part No	Description	Quantity per luminaire
NOR000005110605	VLL/HLL Pipe clamp assy D42 304S/S	2
NOR000005110600	VLL/HLL Pipe clamp assy D51 304S/S	2

### Wall mounting

Part No	Description	Quantity per luminaire
NOR000005110602	VLL/HLL Wall suspension 304S/S	2

### Ceiling mounting

Part No	Description	Quantity per luminaire
NOR000005110601	VLL/HLL Ceiling mounting 304S/S	2
CHLMT2372-01	Mounting sliding rail for 3L	1
CHLMT2372-02	Mounting sliding rail for 5L/7L	1

## Metallic Cable Glands (Order Separately)

### ADE-1F2

Catalog #	Metric Thread Size	Cable Types	Cable sealing range - Min	Cable sealing range - Max
ADE1M201NPN	M20	Non-armoured,	4.5	8.5
ADE1M202NPN	M20	Marine shipboard, Type P, Tray cable	7.0	12.0
ADE1M203NPN	M20	(armoured)	10.0	16.0



### ADE-4F

Catalog #	Metric Thread Size	Cable Types	Cable sealing range inner sheath		Cable sealing range outer sheath		Armor	
			Min.	Max.	Min.	Max.	Min.	Max.
ADE4M201NPN	M20	SWA, SWB, STA, Braided marine shipboard,	4.5	8.0	7.0	12.0	0.2	0.9
ADE4M202NPN	M20	Type P; Leadsheathed cable (with addition of earthing washer)	7.0	12.0	10.0	16.0	0.2	1.3
ADE4M203NPN	M20		10.0	15.5	13.5	21.0	0.2	1.3



ADE-1F2 and ADE-4F catalog numbers are for nickel-plated brass; For other material options, please contact our sales representative.

Polar curve

